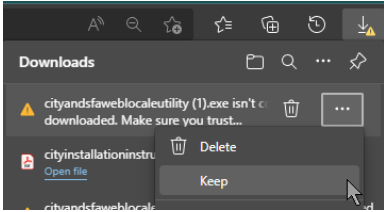
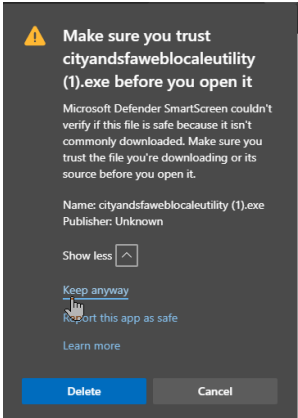
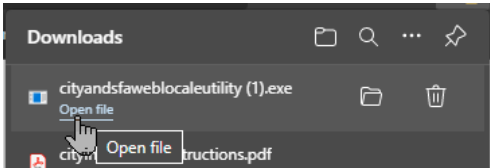
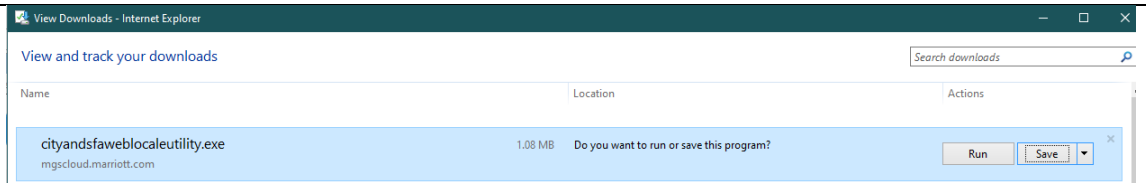


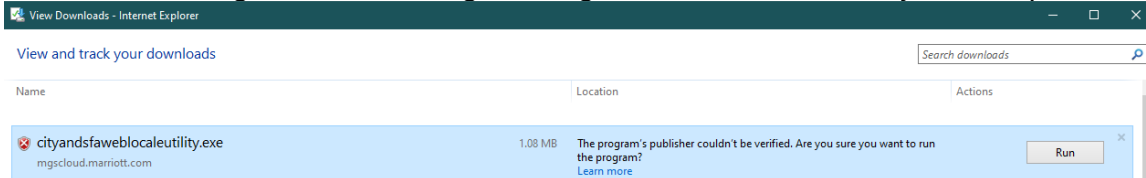
# Install CITY/ SFAWeb and OneSource with Locale Utility

## Steps:

1	<p>Click on <a href="#">Install CITY/SFAWeb/OneSource (EXE)</a></p> <p>Click <b>Allow</b> to launch the hyperlink if prompted by a Security Warning pop-up.</p> <p>Log in with your Enterprise ID and Password if prompted.</p>
2	<p>Follow the next steps based on your browser to save the file</p> <p><b><u>Microsoft Edge Browser Instructions:</u></b></p> <p><b>A.</b> At the top of the browser, the <b>Downloads</b> menu will pop up. Hover over to the right of the warning message and click the triple dots. Click <b>Keep</b>.</p>  <p><b>B.</b> Click <b>Show more</b> and click <b>Keep anyway</b></p>  <p><b>C.</b> Click <b>Open file</b></p>  <p><b><u>Microsoft Explorer Browser Instructions:</u></b></p> <p><b>A.</b> Click on <b>Run</b> when prompted, to start the installation.</p>

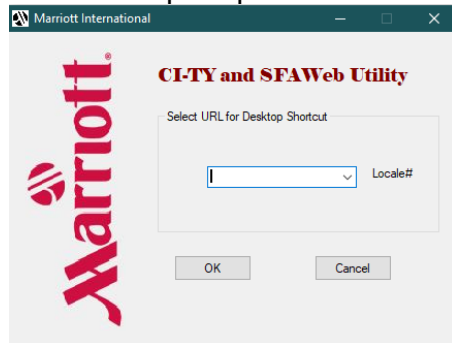


**B.** Click on **Run** to ignore the warning message as this will not harm your computer.

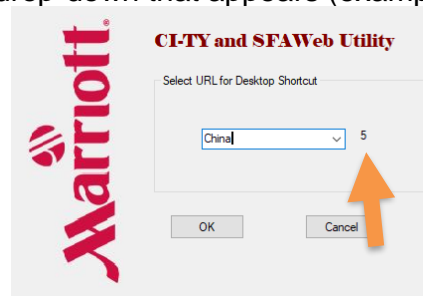
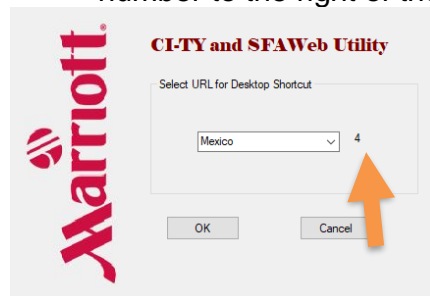


3

You will be prompted with the following window.



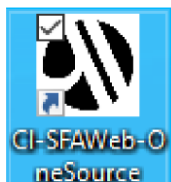
**A.** From the **drop-down** box, select your **country (or Locale)** option. Note the locale number to the right of the drop-down that appears (examples below).



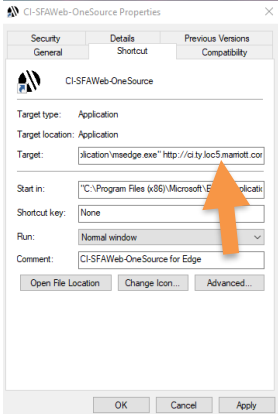
**B.** Click **OK** to install the icon shortcut to the desktop.

4

**A.** Locate the CI-SFAWeb-OneSource icon on your desktop.



**B.** Right-click on the icon and select **Properties**. In the **Target** field, verify the correct Locale URL is installed. The locale will be identified by the number following “loc” in the field. For example <http://ci.ty.loc5.marriott.com>. You will not see the number in the URL for locale 1, it is only used for Locale 2-5.

	
<div style="border: 1px solid black; border-radius: 50%; width: 40px; height: 40px; display: flex; align-items: center; justify-content: center; margin: 0 auto;">5</div>	<p><b>A.</b> Double-click the icon shortcut to launch the application's login page.</p> <p><b>B.</b> Enter your EID and Password and two-factor authentication to validate the connectivity to the application.</p>

## Questions?

- **ServiceNow:** [Get Help >Sales, Revenue Mgmt and Reservations Support > Sales & Catering Solutions](#)